



# SFE

## 25/50/75

The SFE is an electrostatic filter for kitchen exhaust air. The SFE is designed to be installed in the extraction duct of a commercial kitchen downstream of the extraction hood. Depending on the levels of grease and smoke, several units can be joined to create double, triple or even quadruple pass systems. The SFE range, designed with commercial kitchens in mind, features a low pressure drop and an integrated oil collector which ensures easy oil removal.

### APPLICATIONS

The SFE range is **intended** to be used for the following applications:

- filtration of extracted fumes from commercial kitchens



Do **not** use the SFE range for the following applications or in the following circumstances:

- extraction of hot air, gases or vapours (>45°C)
- high concentrations of mill dust, flower dust etc.
- relative humidity >80%



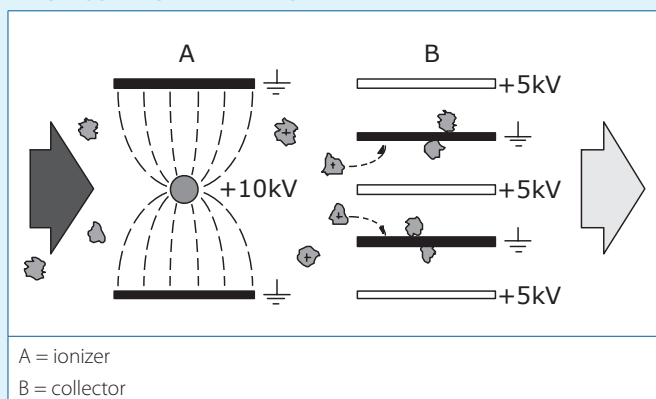
### SPECIFICATIONS

	SFE-25	SFE-50	SFE-75
Physical dimensions and properties			
Heigth	630 mm	630 mm	630 mm
Width	560 mm	1010 mm	1460 mm
Depth	660 mm	660 mm	660 mm
Weight (net)	60 kg	100 kg	140 kg
Material housing	epoxy coated steel		
Colour	grey RAL 7035		
Filters			
Filter package			
• FIS (ionizer)	1	2	3
• FCS (collector)	1	2	3
Material	aluminium		
Max. filtration capacity	2500 m³/h	5000 m³/h	7500 m³/h
Filter surface	14,2 m²	28,4 m²	42,6 m²
Pre-/final filters	to be selected / ordered separately		
Pressure drop	< 150 Pa	<175 Pa	<250 Pa
Electrical data			
Supply voltage	230-400V / 1-3ph / 50-60Hz		
Power consumption	35 W	40W	50 W
Control voltage	24 VAC		
Control fuse	2.0 AT		
Voltage ionizer	+5 kV		
Voltage collector	+10 kV		
Protection class	IP 55		

	SFE-25	SFE-50	SFE-75
Ambient conditions			
Operating temperature <ul style="list-style-type: none"><li>• minimum</li><li>• nominal</li><li>• maximum</li></ul>	5°C 20°C 45°C		
Max. relative humidity	80%		
Outdoor use allowed	no		
Storage conditions	<ul style="list-style-type: none"><li>• 5 - 45°C</li><li>• relative humidity max. 80%</li></ul>		
Product combinations (choise required)			
Pre-filters <ul style="list-style-type: none"><li>• SAF</li><li>• SOD</li></ul>	<ul style="list-style-type: none"><li>• aluminium filter (standard)</li><li>• demister for oilmist application</li></ul>		
Final filters <ul style="list-style-type: none"><li>• SAF</li><li>• SSF</li><li>• SCF</li><li>• SBF</li></ul>	<ul style="list-style-type: none"><li>• aluminium filter (standard)</li><li>• progressive synthetic filter (filter class G3)</li><li>• activated carbon filter for odour control</li><li>• synthetic bag filter (additional final filter; filter class F8)</li></ul>		
Options			
Oil disposal device	oil drainer		
Outlet grid	OG-25	OG-50	
Connection piece	RP-315/25	RP-400/50 RP-450/100	
<ul style="list-style-type: none"><li>• Remote control</li><li>• with timer</li></ul>	RC-MSA RC-MSA/T		
Additional unit with bag filter	SFM-25	SFM-50	SFM-75
Scope of supply			
<ul style="list-style-type: none"><li>• Filter unit (incl. ionizer + collector, excl. pre and final filter)</li><li>• Electrical diagram</li><li>• Manual</li><li>• Square key 6 mm</li></ul>			

Order information			
Article number			
Airflow left-right			
• 230V/1 ph/50Hz	7940040000	7941040000	7942040000
• 400V/3ph/50Hz	7940042000	7941042000	7942042000
Airflow right-left			
• 230V/1 ph/50Hz	7940140000	7941140000	7942140000
• 400V/3ph/50Hz	7940142000	7941142000	7942142000
Number / package	1		
Shipping data			
Gross weight (1 pc.)	75 kg	115 kg	155 kg
• Max. number / pallet	6	3	3
• Packing dimensions	80 x 130 x 210 cm	80 x 120 x 210 cm	80 x 160 x 210 kg
• Gross weight	375 kg	315 kg	435 kg
Harmonized Tariff Code	8421.39.2090		
Country of origin	Netherlands		

### ELECTROSTATIC FILTER PRINCIPLE

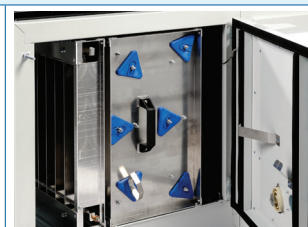


### QUALITY MARKS



### FEATURES

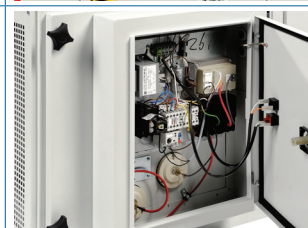
Constant extraction level due to open structure



High voltage indicator light



Easy access to electro part



Product type	SFE-25/50/75
Product group	Air cleaners
Version	01052015/0